



## Sutorbilt Legend Series 4HP with Corroduty electric motor

### **Legend®, Legend® Q, Legend® DSL**

The Sutorbilt Legend line of rotary positive displacement lobe blowers and vacuum pumps are the result of more than 75 years' experience in the design, manufacture and support of superior industrial blower equipment. These blowers are at the heart of an ever-expanding variety of air solutions working every minute of every day around the globe.

- The Sutorbilt Legend series is available with a Quiet option (Q-Series) for reduced noise up to 5 dBA and Dual Splash Lubrication (DSL -Series) for cooler operating temperature and reduced maintenance
- Proven performance and reliability
- Pressure to 15 psig
- Vacuum to 16" Hg
- Airflow to 815 cfm

**Contact us for a price on this refurbished blower unit.**

**363 W. SOUTH AIRPORT ROAD - TRAVERSE CITY, MI 49686 - BUS: (231) 264-3000 - FAX: (231) 264-3001  
10312 North Holly Road - HOLLY, MI 48442 - BUS: (810) 238-9190 - FAX: (810) 238-9195**

[www.global-treatmentsolutions.com](http://www.global-treatmentsolutions.com)

# Legend® Q Series

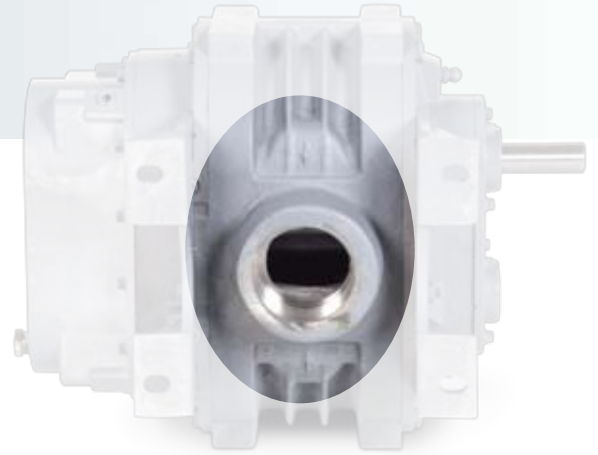
PD Blowers & Vacuum Pumps



Experience Proven Results

# Legend® Q Series

## The choice of leading OEMs

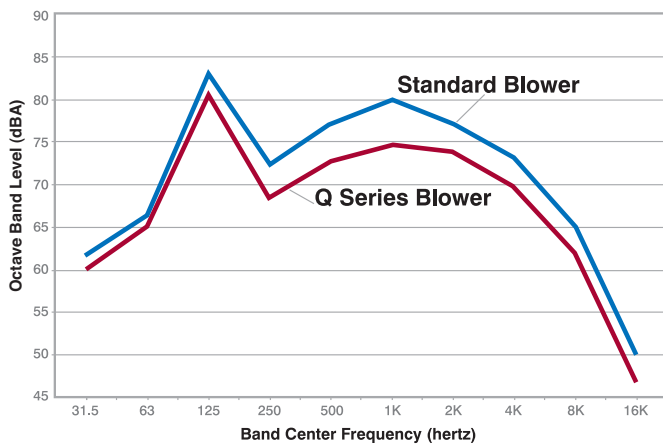


Unique porting arrangement featured above reduces noise levels

## Over 70 Years of Proven Results

Sutorbilt® Legend® Q Series offers significant advantages:

- Quiet operation **up to 5 dBA** reduction
- Highest quality materials and construction
- Flexible installation capability
- Available in 5 quiet sizes: 3MQ, 4HQ, 4MQ, 5MQ, 6MQ
- *Shhh!* The Legend Q Series delivers:
  - Pressure to 15 psig
  - Vacuum to 16" Hg
  - Airflow to 815 cfm



## Q = QUIET OPERATION

- Reduced noise levels **up to 5 dBA**
- Unique porting design of the housing reduces pulsation through the gradual intake and release of air resulting in quieter discharge noise

## OIL-FREE AIR DELIVERY

- High temperature-resistant seals provide leak-free operation in severe-duty applications

## QUALITY PROMISE

Each model incorporates the following for longer service life and reduced downtime

- Backed by one of the largest distributor networks in the industry
- Every Q Series machine is built under rigid ISO 9001:2000 quality standards
- Each Q Series is individually tested to meet rigorous performance specifications
- Warranty Period
  - 24 months from the date of shipment or
  - 18 months from the date of installation, whichever occurs first
- High strength impeller case for reduced noise and vibrations
- Integral heat dissipation fins on the case to help maintain proper clearances
- Oversized heavy-duty bearings for added overhung load capacity

## FLEXIBLE INSTALLATION

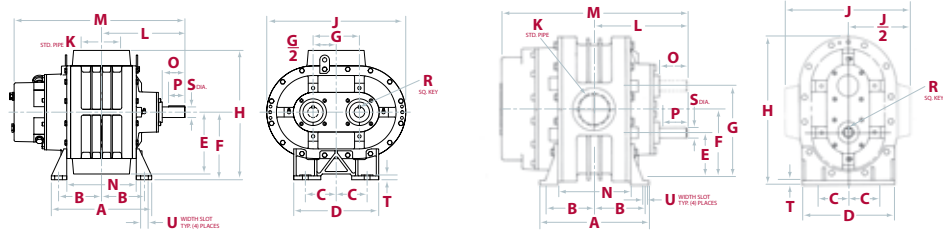
- Flex-Mount™ mounting feet are precisely machined and match the mounting footprint of many competitive units in either vertical or horizontal installations
- Inlet and outlet ports include FNPT connections for ease of plumbing

# Performance Data

P R E S S U R E	MODEL	RPM	DIA INLET & OUTLET	DISPL. CU. FT./REV.	7 PSIG		9 PSIG		10 PSIG		12 PSIG		13 PSIG		14 PSIG		15 PSIG	
					CFM	BHP	CFM	BHP	CFM	BHP	CFM	BHP	CFM	BHP	CFM	BHP	CFM	BHP
					3MQ 3MVQ	1,760 2,265 2,770 3,600	2" NPT	0.060	64 95 125 175	3.6 4.6 5.5 7.2	59 89 119 169	4.6 5.8 7.1 9.2	87 117 147 199	6.4 7.9 9.2 10.2	112 142 172 224	9.5 12.3 15.1 19.9		
4HQ 4HVQ	1,760 2,190 2,620 3,600	1½" NPT	0.069	80 110 139 207	4.0 5.0 6.0 8.2	74 104 134 201	5.2 6.4 7.7 10.6	72 102 131 199	5.8 7.2 8.6 11.8	97 127 157 219	8.6 10.3 12.1 16.1	124 154 184 252	11.1 13.9 16.7 22.5	190 230 270 360	16.5 20.5 24.5 32.5	188 238 288 398	17.7 22.7 27.7 37.7	
4MQ 4MVQ	1,760 2,190 2,620 3,600	2½" NPT	0.117	144 194 245 359	6.8 8.5 10.2 14.0	136 186 236 351	8.8 10.9 13.1 18.0	132 182 233 347	9.8 12.1 14.5 20.0									
5MQ 5MVQ	1,500 1,760 2,100 2,850	4" NPT	0.210	237 292 363 521	10.5 12.3 14.6 19.9	227 281 353 510	13.4 15.8 18.8 25.5	222 277 348 506	14.9 17.5 20.9 28.4	213 268 339 497	17.9 21.0 25.1 34.0	209 263 335 493	19.4 22.8 27.2 36.9					
6MQ 6MVQ	1,170 1,760 1,930 2,350	5" NPT	0.383	332 558 622 784	14.9 22.4 24.5 29.9	316 542 607 768	19.1 28.8 31.5 38.4	309 535 600 761	21.2 32.0 35.0 42.7	296 522 587 748	25.5 38.3 42.0 51.2	289 515 580 741	27.6 41.5 45.5 55.5	283 509 574 735	29.7 44.7 49.1 59.7			

V A C U U M	MODEL	RPM	DIA INLET & OUTLET	DISPL. CU. FT./REV.	6" HG		10" HG		12" HG		14" HG		15" HG		16" HG	
					CFM	BHP	CFM	BHP	CFM	BHP	CFM	BHP	CFM	BHP	CFM	BHP
					3MQ 3MVQ	1,760 2,265 2,770 3,600	2" NPT	0.060	76 106 136 186	1.6 2.0 2.4 3.1	63 93 124 174	2.6 3.3 4.0 5.0	57 87 117 167	3.1 3.9 4.7 6.0	110 160	5.4 7.0
4HQ 4HVQ	1,760 2,190 2,620 3,600	1½" NPT	0.069	91 121 151 218	1.7 2.1 2.5 3.5	79 109 138 206	2.8 3.5 4.2 5.8	72 102 132 199	3.4 4.2 5.1 6.9	95 124 154 219	4.9 5.9 6.8 9.1	91 120 150 215	5.3 6.3 7.3 10.0	184 254	9.3 12.3	
4MQ 4MVQ	1,760 2,190 2,620 3,600	2½" NPT	0.117	161 211 262 376	3.0 3.7 4.4 5.9	142 193 243 358	4.9 6.0 7.1 9.8	132 183 233 348	5.8 7.2 8.6 11.8	222 337	10.0 13.7	331 446	14.7 19.4	325 440	15.7 21.4	
5MQ 5MVQ	1,500 1,760 2,100 2,850	4" NPT	0.210	258 313 384 542	4.5 5.2 6.2 8.4	235 290 361 519	7.3 8.6 10.3 13.9	223 277 349 506	8.8 10.3 12.3 16.7	209 264 335 493	10.3 12.1 14.4 19.5	328 433 548	15.4 19.1 23.8	477 592	22.3 29.0	
6MQ 6MVQ	1,170 1,760 1,930 2,350	5" NPT	0.383	363 589 655 815	6.3 9.4 10.3 12.6	328 554 619 780	10.4 15.7 17.2 21.0	310 536 601 762	12.5 18.8 20.7 25.2	290 516 581 741	14.6 22.0 24.1 29.3	279 505 570 731	15.7 23.5 25.8 31.4	267 493 558 719	16.7 25.1 27.5 33.5	

Performance based on inlet air at standard temperature of 68°F, an ambient pressure of 14.7 psia and 36% relative humidity. For performance with gasses other than air or at non-standard conditions, contact your authorized Gardner Denver representative.

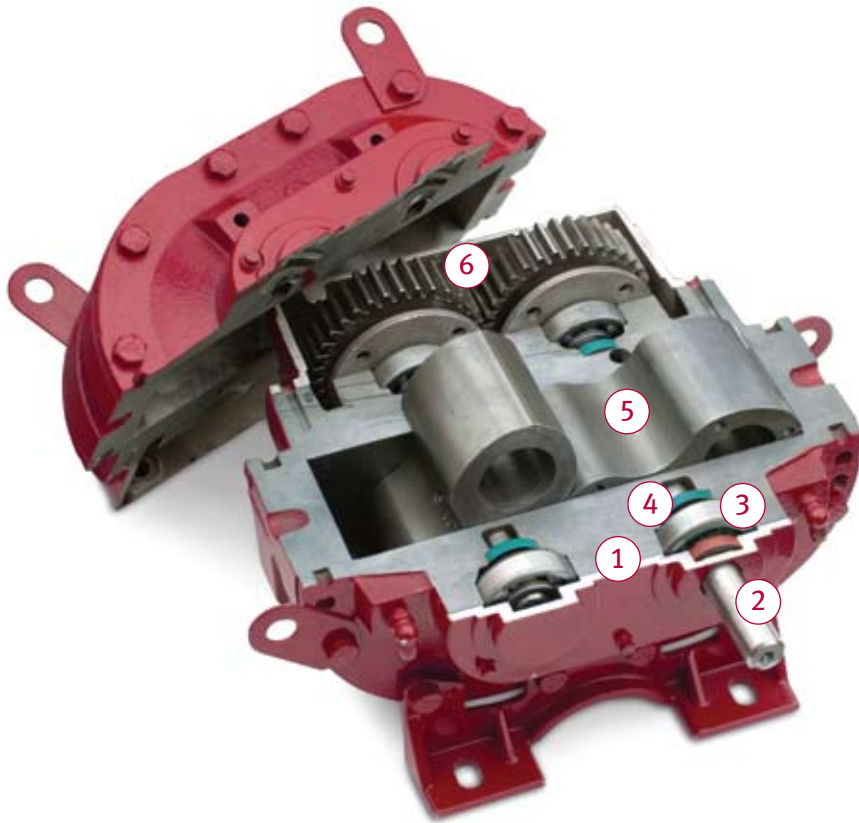


# Dimensional Data

HORIZONTAL CONFIGURATIONS	SIZE	WT	CONN	A	B	C	D	E	F	G	H	J	K	L	M	N	O	P	R	S	T	U
	3MQ	79	S	7.63	3.13	2.88	7.75	4.88	5	3.5	9.88	11.25	2	6.25	12.75	4.38	2	1.44	.19	.750	.25	.5 x .75
4HQ	106	S	7.25	3	3	8	5.48	6.25	4	11.54	12.38	1.5	6.88	13.75	4	2.38	1.81	.19	.875	.38	.5 x .75	
4MQ	125	S	9.5	4.13	3	8	5.75	6.25	4	11.7	12.38	2.5	8	16	6.25	2.38	1.81	.19	.875	.38	.5 x .75	
5MQ	237	S	10.5	4.5	3.5	9	6.48	7	5	13.48	15.38	4	9.19	19.19	6.88	2.5	1.81	.25	1.125	.38	.56 x .75	
6MQ	426	S	13	5.56	4	11	8	8.75	6	16.75	18	5	10.8	22.38	9	2.94	2.13	.31	1.375	.63	.75 x 1	

VERTICAL CONFIGURATIONS	SIZE	WT.	CONN.	A	B	C	D	E	F	G	H	J	K	L	M	N	O	P	R	S	T	U
	3MVQ	79	S	7.63	3.06	2.5	6.75	4.5	6.25	8	11.88	9.75	2	6.25	12.75	4.38	2	1.44	.19	.750	.25	.5 x .75
4HVQ	106	S	7.25	3	3	8	4.5	6.5	8.5	12.69	11.19	1.5	6.88	13.75	4	2.38	1.81	.19	.875	.38	.5 x .75	
4MVQ	125	S	9.5	4.13	3	8	4.5	6.5	8.5	12.69	11.19	2.5	8	16	6.25	2.38	1.81	.19	.875	.38	.5 x .75	
5MVQ	237	S	10.5	4.5	3.5	9	5.5	8	10.5	15.69	13	4	9.19	19.19	6.88	2.5	1.81	.25	1.125	.38	.56 x .75	
6MQ	426	S	13	5.56	4	11	8.75	11.75	14.75	20.75	16	5	10.8	22.38	9	2.94	2.13	.31	1.375	.63	.75 x 1	

S=Threaded connections std. NPT. Intake and outlet connections are same type and size. Dimensions in inches, weight in pounds and approximate. Dimensions for installation purposes will be furnished upon request.



## Design Advantages

1. High-strength impeller case is heavily ribbed to result in reduced noise (up to 5 dBA) and more stable, vibration-free operation
2. Steel drive shaft provides extra strength and rigidity for greater overhung load capacity
3. Heavy duty bearings for greater reliability
4. Shaft lip seals provide oil-free air delivery
5. Cast iron rotors are dynamically balanced for smooth operation in any configuration
6. Alloy steel timing gears are splash-lubricated for longer service life

### Genuine Gardner Denver Parts and Lubricants

- Maintain the Gardner Denver performance advantage and reliability with Genuine GD Replacement Parts available through authorized sales and service representatives
- Protect your Gardner Denver investment with AEON® PD, the only lubricant specially formulated for all blowers in any environment
- Available for standard, food grade and extreme duty applications



# Gardner Denver®

[www.GardnerDenverProducts.com](http://www.GardnerDenverProducts.com) [pd.blowers@gardnerdenver.com](mailto:pd.blowers@gardnerdenver.com)

Gardner Denver, Inc. 1800 Gardner Expressway, Quincy, IL 62305  
Telephone: (800) 682-9868 FAX: (217) 221-8780

©2009 Gardner Denver, Inc. Litho in U.S.A. PD-SB-LQ 1st Ed. 12/09



Please recycle after use.